

Moreland
Labor

MORELAND CITY COUNCIL LABOR COMMUNITY

POLICY PLATFORM 2020



DELIVERING FOR YOUR COMMUNITY



Source: State Library of Victoria, Fowler, Lyle
1891-1969 photographer

With the impact of COVID-19, now more than ever do we need to bring together our community so we can deliver the services that they need.

Local government is the level of government closest to the community and is critical because of Council's vast range of social and cultural services and infrastructure including:

- Community services - including childcare, family, young people, aged and home care;
- Arts and culture; roads, bikepaths, footpaths;
- Environmental services including environmental management, waste management, energy and climate responses;
- Water efficiency and improved water catchment;
- Community infrastructure including sports grounds, swimming pools, parks, community centres and tourism facilities;
- Urban planning, economic development and emergency services.

Labor will continuously improve local community services and infrastructure. Labor will help local government innovate in the management of services and in the construction of community infrastructure to deliver benefits and opportunities for our local communities. Where appropriate Moreland Labor will support partnerships with State and Federal governments to further improve Council services and local infrastructure. This cooperation is demonstrated by the Andrews Government's recent investment in the Coburg and Glenroy Level Crossing Removals.

With your support, we can help make this plan a reality.

Moreland
Labor

OUR COMMUNITY PLAN

SUMMARY 1 OF 4

Urban Planning:

- Respects neighbourhood character and heritage
- Provides appropriate parking
- Adheres to design guidelines and height limits
- Links in with public transport

Open and Accountable Government

- Respond quickly to phonecalls and emails
- Conduct regular ward meetings
- Use on-line and video technology to ensure Council meetings are open
- Increase communication through newsletters, social media, online platforms
- Ensure that key messages are communicated in the main community languages

Support the Local Economy:

- Support local businesses during the recovery from the pandemic
- Revitalise the Brunswick Business Incubator
- Expand the Business Incubation program to the northern part of Moreland
- Support the viability and future of local shopping centres including making Sydney Road more friendly to pedestrians and cyclists

Rates and Finances:

- Keep rate rises to CPI levels as determined by the Minister
- Advocate for an increase to the pensioner rebate and develop a Hardship Policy that enables residents to defer rates or enter payment plans in time of hardship
- Allocate spending in an equitable manner – spending will be effectively targeted, sustainable and produce clear service delivery outcomes
- Set user charges within a range that reflects the social, cultural and economic make-up of Moreland

OUR COMMUNITY PLAN

SUMMARY 2 OF 4

Parking and Transport

- Design and implement a Fair Parking Policy, working with communities to create local parking plans to prioritise the needs of the various users depending on the type of area
- We will not de-regulate parking requirements for new developments or increase restricted parking zones around activity centres
- Advocate with the State Government for improvements to public transport – such as the duplication of the Upfield Railway line north of Gowrie and increased frequency of bus services
- Continue to implement the Moreland Bicycle Plan to improve the bicycle network in the municipality including the provision of marked bicycle lanes on roads and extensions to the off road networks
- Implement innovative programs to encourage more walking trips and to increase pedestrian safety
- Support the campaign to lower speed limits in local neighbourhood streets through traffic calming measures

Parks and Green Spaces:

- Continue to work to ensure that all residents have quality, accessible open space within safe walking distance, especially in higher density areas using open space levies paid by developers
- Continue to develop parkland along our creek corridors and improve the natural environment so native wildlife can return to the creeks and wetlands
- Ensure that the newly-created open space under the skyrail is developed in consultation with the local community

Sport and Recreation:

- Ensure that Council owned facilities are adequately maintained and improved
- Protect sporting reserves and move to ensure that all public land and open space is utilised to its full potential
- Upgrade sporting pavilions and change rooms to enable greater access and participation of sports by juniors and female teams
- Investigate sharing arrangements of open space and sporting facilities at local schools, aiming to form partnerships that benefit both the local community and the schools

OUR COMMUNITY PLAN

SUMMARY 3 OF 4

Community Well-Being

- Support an expansion of childrens' services including supporting more community childcare places, and expanding Council's own family day care scheme
- Promote an inclusive Moreland community that provides access and equity to people with disability, their families and carers
- Support the expansion of services at the Oxygen Youth Centre and implement the Moreland Youth Action Plan
- Support home and community care and will lobby the Federal government to increase funding to Local Government to continue to run these services
- Support an increase in the amount of affordable housing by pursuing community partnerships with housing providers to develop and advocate for land to be transferred to Council ownership for development as affordable housing

Arts and Culture:

- Build the Arts Precinct in Brunswick as a significant regional arts precinct
- Develop arts infrastructure in the northern areas of the municipality to ensure that all residents have access to the arts and that art, music and drama groups have appropriate spaces for performance and local expansion
- Coordinate a range of engaging cultural and artistic events, exhibitions and performances throughout the year

Library Services:

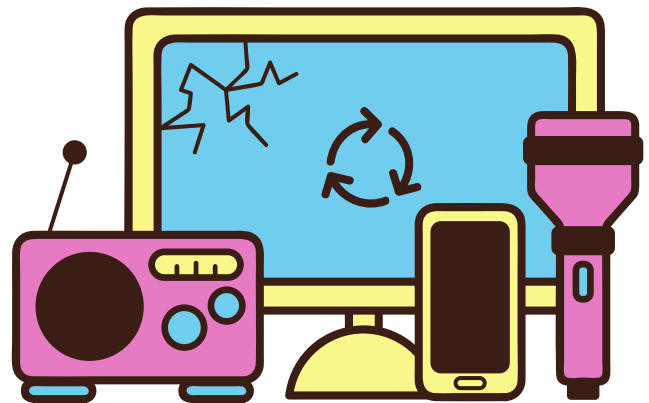
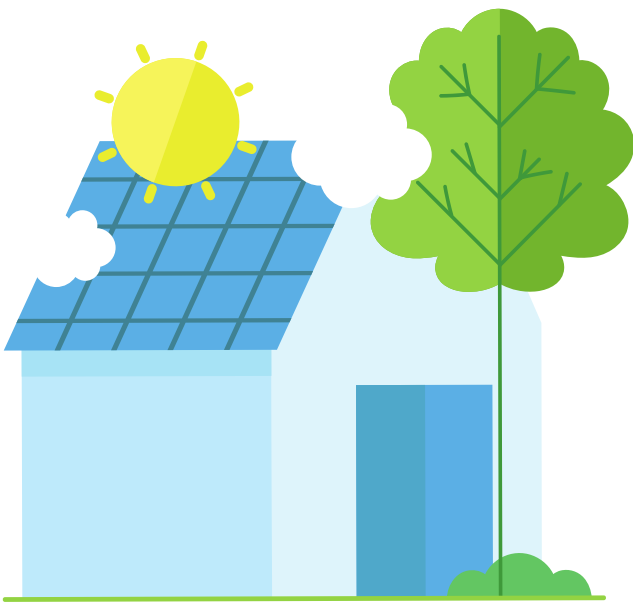
- Complete the Wheatsheaf Community Hub in Glenroy. which will include a new library, educational spaces and a health facility
- Continue to ensure that the funds for the purchase of new books, audio visual and electronic resources
- Support our libraries in providing more activities and programs including rhyme time and story time in different languages for children and families

OUR COMMUNITY PLAN

SUMMARY 4 OF 4

Environment:

- Develop initiatives and programs to reduce our community emissions to zero and become a strong advocate for climate action by all levels of Government
- Encourage regular recycling and the four-bin system aiming for zero waste sent to landfill
- Retain two hard waste collections per year and encourage more recycling of more items, including electronics



Want to make positive change?
visit morelandlabor.com.au

Moreland
Labor

ECONOMIC DEVELOPMENT

Labor in Moreland will promote a revitalised local economy and commits to:

- Supporting local businesses during the recovery from the pandemic;
- Supporting investment, retention and establishment of new businesses;
- Revitalising the Brunswick Business Incubator;
- Expanding the Business Incubation program to the northern part of Moreland;
- Supporting Moreland Community Enterprise Centre in providing affordable office space;
- Supporting the viability and future of local shopping centres;
- Providing for prudent Council budgets.

Council remains focused on the provision of council services while working with businesses to support enterprise and to develop the skills of the local workforce. Labor in Moreland will support business associations and look at increasing efficiencies, and will support firms accessing government programs.

Revitalisation of Shopping Strips

Labor in Moreland will uphold and improve the amenity and appeal of local shopping centres with practical measures such as clear parking signage, appropriate levels of cleaning and rubbish facilities, provision of bike racks, seating and beautification works.

Labor in Moreland will deliver development plans for the three main activity centres, Brunswick, Coburg and Glenroy.

Sydney Road

Sydney Road is a destination within walking distance for many of us. Its businesses have been badly impacted by COVID-19. Moreland Labor commits to revitalising Sydney Road and preparing a Sydney Road strategy as a priority for the new Council.

Revitalising local commerce needs foot traffic, you cannot buy a wedding dress from a car nor on a bicycle. Footpaths need to be well lit and stylish with benches, street cafes and public art. Sydney Road as a slow road can have shared on-street spaces with pedestrian refuges, bicycle use and even some on-street parking. Off street parking needs to be easily accessible and well integrated.

ECONOMIC DEVELOPMENT

Moreland Labor will work with the State Government, local traders and the community to build this strategy and to invest to make Sydney Road a destination for Melbourne.

Working with the State Government there will also be a need to improve the tram service, increasing tram priority along the street, and building accessible and stylish tram stops that can also act as gathering places.

FINANCIAL MANAGEMENT

Rates

Moreland Labor will keep rates to CPI levels as determined by the Minister.

Labor in Moreland will advocate for an increase to the pensioner rebate and develop a Hardship Policy that enables residents to defer rates or enter payment plans in time of hardship.

Financial Planning

Labor in Moreland will support the long-term Financial Plans according to the following principles:

- Infrastructure must be renewed - adequate funding will be allocated to existing Moreland infrastructure;
- Revenue collection must remain equitable and in accordance to the community's capacity to pay;
- Council will be able to borrow for new infrastructure where is appropriate and prudent;
- Spending will also be allocated in an equitable manner – spending will be effectively targeted, sustainable and produce clear service delivery outcomes.
- User charges will only be imposed where necessary and they will be set within a range that reflects the social, cultural and economic make-up of Moreland.

COMMUNITY WELL-BEING

Public Health

Labor in Moreland will promote well-being. Labor in Moreland is committed to the implementation of the Municipal Public Health and Wellbeing Plan. Labor commits to Moreland Council and Merri Health building an alliance to improve well-being and mental health in the city.

COVID-19 Emergency

Labor in Moreland will:

- Promote health messages from the Health Department;
- Keep clean public places and commonly touched surfaces;
- Provide support to the most vulnerable.

Aged Care

Labor in Moreland supports home and community care and will lobby the Federal government to increase funding to Local Government to continue to run these services.

Labor in Moreland will promote strategies to combat social isolation and create a more engaged community.

Maternal & Child Health Services

Labor in Moreland will support families to provide an environment where children can develop to their fullest potential. To achieve this Labor will:

- Increase parenting programs;
- Support high quality Maternal and Child Help Services;
- Be guided by the principles of the Victorian Child-Friendly Cities and Communities Charter;
- Improve access for all families with young children to the support they need.



COMMUNITY WELL-BEING

Child Care and Children's Services

Labor will support an expansion of children services including supporting more community childcare places, and expanding Council's own family day care scheme.

Disability

Labor will promote an inclusive Moreland community that provides access and equity to people with disability, their families and careers.

Labor will implement the goals of the Disability Access and Inclusion Plan which include:

- To improve the physical environment so it is safe, accessible and inclusive for all;
- To increase employment and economic participation for people with a disability in the Moreland community;
- Labor in Moreland will support AbilityFest which aims to use music as a platform to normalise disability.

Young People

Labor in Moreland will support the expansion of services at the Oxygen Youth Centre and implement the Moreland Youth Action Plan including the following actions:

- Moreland Youth Services as the first point of contact for young people and community;
- Implement health programs that address the health needs of young people;
- Undertake research and advocacy to address issues around youth employment and education.

Gambling

Labor in Moreland will support the Gambling in Moreland Strategy to Reduce the Harm from Gambling. Labor in Moreland will continue to develop programs to mitigate the harm caused by problem gambling.

COMMUNITY ENGAGEMENT

Human Rights

Labor in Moreland commits to the Moreland Human Rights Policy, which gives us a common framework for all and ensures equitable access to services.

Harmony and Cultural Diversity

- Labor in Moreland will celebrate our diversity by providing programs and activities that promote tolerance and understanding between all citizens of Moreland;
- Labor in Moreland will continue to explore new and innovative means of displaying and celebrating the cultural diversity of Moreland;
- Labor in Moreland recognises the value of Moreland's special relationship with Xianyang in China, Aileu in East Timor, Sparta in Greece and other Friendship Cities;
- Labor in Moreland will continue its special relationship with Aileu in East Timor and assist the Timor-Leste Government in establishing democratic local government.

Reconciliation

Labor in Moreland shall continue to work with the Wurundjeri Council to promote reconciliation in the community. Labor in Moreland acknowledges the importance of Country to Wurundjeri people and will support more opportunities for Wurundjeri people to manage and have a say over the development of bushlands and grasslands along the creek corridors.

Labor in Moreland will support greater employment opportunities within Council for First Nations people.



COMMUNITY ENGAGEMENT

LGBTIQ+ Communities

- Labor in Moreland will develop a plan to support and engage our Lesbian, Gay, Bisexual, Transgender, Intersex and Queer Diversity and Inclusion communities;
- Labor in Moreland will increase engagement and consultation with LGBTIQ+ residents to address and prevent discrimination and stigma, promote safety and wellbeing, health and community services, and greater advocacy on LGBTIQ+ issues
- Labor in Moreland will participate in Midsummer Festival, Melbourne Pride and run LGBTIQ+ community events and festivals.

Gender Equality

Gender equality is achieved when all people have equal rights, responsibilities, and opportunities.

Achieving gender equality will help prevent violence against women and girls, create a safer and healthier community, and contribute to economic prosperity for all.

The Victorian State Government legislated Australia's first Gender Equality Act and has requirements for Local Government to contribute to the vision where all Victorians live in a safe and equal society, have equal access to power, resources and opportunities, and be treated with dignity, respect and fairness.

Moreland Labor will work with the Victorian Government by taking measurable actions to work with our community to build a culture of respect and fairness to create behaviour change by:

- Developing and supporting a Gender Equality Action plan including a safety audit of public places;
- Support services and campaigns against family and gendered violence;
- Expanding maternal and child health services, and parenting programs;
- Creating more child-care places and advocate for earlier access to 3 year-old kinder programs;
- Ensuring the principles of gender equality are applied to all decision making and policy development processes throughout the Council.



COMMUNITY ENGAGEMENT

Family and Gender-based Violence

Labor in Moreland believes everyone has right to be safe in our community and their home.

Labor in Moreland in conjunction with local welfare groups will implement a range of local actions to respond to and prevent family and gender-based violence in Moreland.

Community Safety

- Labor in Moreland will take steps to help improve community safety, with a focus on public lighting, late night taxi ranks, CCTV cameras and local laws;
- Labor in Moreland will work with Victoria Police to undertake a safety audit of public places;
- Labor in Moreland will maintain CCTV cameras along Sydney Road Brunswick, which are connected to the Brunswick Police Station and fully operational 24 hours a day;
- Labor in Moreland will install more environmentally friendly LED lights resulting in fewer dark spots.

ARTS & CULTURE

Labor in Moreland commits to strengthening the significant creative sector in Moreland and enhancing its standing as a destination for the arts:

- Labor in Moreland will build the Arts Precinct in Brunswick as a significant regional arts precinct;
- The Mechanics Institute will be maintained as a performing arts place and include a local component in its program;
- Labor in Moreland will seek partners to further expand the Brunswick arts precinct including developing artists incubation and discounted art spaces and support creative industries.
- Labor in Moreland will seek to develop arts infrastructure in the northern areas of the municipality to ensure that all residents in the municipality have access to the arts and that art and drama groups have appropriate spaces for performance and local expansion.

ARTS & CULTURE

Festivals

Labor in Moreland will coordinate a range of engaging cultural and artistic events, exhibitions and performances throughout the year.

Labor in Moreland will celebrate Christmas with Christmas decorations in activity centres and Carols by the Lake, and celebrate Easter, Ramadan, Diwali and other religious festivals celebrated in our community.

ENVIRONMENT LEADERSHIP

Environment and Climate Change

Moreland Labor has a proud record of promoting strong environment policies including the establishment of CERES and the Australian Energy Foundation and achieved our goal of making Moreland City Council carbon neutral in 2012.

Moreland Labor believes its time to move towards zero carbon emissions.

Labor in Moreland's Environment and Climate Change policy will develop initiatives and programs to reduce our community emissions to zero and become a strong advocate for climate action by all levels of Government.

Waste and Recycling

Labor in Moreland will encourage regular recycling and the four-bin system.

Labor in Moreland supports the concept of a circular economy and the reuse of materials, and encourage residents to reduce waste aiming for zero waste sent to landfill.

Labor in Moreland will retain two hard waste collections per year and encourage more recycling of more items, including electronics.

SUSTAINABLE TRANSPORT

Sustainable Transport

- Labor in Moreland will encourage more sustainable modes of transport including walking, cycling, and public transport;
- Advocate with the State Government for improvements to public transport – such as the duplication of the Upfield Railway line north of Gowrie and increased frequency of bus services;
- Continue to implement the Moreland Bicycle Plan to improve the bicycle network in the municipality including the provision of marked bicycle lanes on roads and extensions to the off road networks;
- Implement innovative programs to encourage more walking trips and to increase pedestrian safety;
- Support the campaign to lower speed limits in local neighbourhood streets through traffic calming measures.

Water

Labor in Moreland will develop strategies to harvest water and ensure litter does not filter into our creeks and waterways.

PLANNING THE CITY

Urban Planning

Labor in Moreland supports a planning system that encourages sustainable and appropriate development that:

- Respects neighbourhood character;
- Supports diversity in housing choice;
- Is sensitive to the capacity of local infrastructure, traffic congestion and parking;
- Complies with design guidelines and local height limits;
- Provides appropriate car parking;
- Links in with Moreland's public transport network;
- Protects our industrial and commercial zoned land for employment activities.

PLANNING THE CITY

Parking

Moreland Labor opposes the Greens agenda to deregulate parking requirements for new developments in Moreland's Activity Centres and the creation of Parking Restriction Zones.

Labor supports a parking strategy to manage parking supply with appropriate parking restrictions. Moreland Labor will work with communities to create local parking plans. These will include preparing a municipal Kerbside Road Space User Hierarchy based on local land uses. This system will prioritise the needs of the various users depending on the type of area considered. For example, residents are favoured in parking provision in residential areas but less so in activity centres, while workers and service users will be favoured around schools, medical and other community facilities.

Heritage

Labor in Moreland will support the incorporation into the planning scheme of further buildings of importance to the community. Creating a Clean and Sustainable City, Labor in Moreland wants to create civic pride in our city and will improve community infrastructure beautifying public spaces and streetscapes.

Labor in Moreland will plant and maintain more trees with large canopy to mitigate against the heat island affect and cool our city in the summer months.

Labor will install more public seating and lighting to encourage more walking.

Affordable Housing

Labor in Moreland will pursue community partnerships with housing providers to develop and encourage affordable housing that meets the needs of our community.

Labor in Moreland will support the Moreland Affordable Housing Ltd (MAH) in its efforts to address the lack of secure and affordable housing options available to residents across Moreland. Labor in Moreland will assist MAH participation in innovative development and financing models, and work with stakeholders including the state and federal government and agencies related to affordable housing developments.

We will actively seek out suitable sites and advocate for them to be transferred to Council ownership for development of affordable housing.

PLANNING THE CITY

Infrastructure

Labor in Moreland will adequately maintain and improve our roads, paths and associated infrastructure and will continue to use 5 year forward looking plans to ensure adequate funding is provided for the maintenance of our road networks.

Labor in Moreland will continue to ensure that where road reconstructions are planned, notice is given to all affected parties and that residents are given a chance to provide input into the design.

Labor in Moreland will support the campaign to lower speed limits in local neighbourhood streets, stopping rat-running and supporting traffic calming measures.

Pedestrians

Labor in Moreland will continue to implement innovative programs to encourage more walking trips and to increase pedestrian safety.

Labor in Moreland will continue to ensure that new or rebuilt roads contain measures to improve pedestrian amenity and safety.

Bicycles

Labor in Moreland will continue to implement the Moreland Bicycle Plan to improve the bicycle network in the municipality. This includes the provision of marked bicycle lanes on roads and extensions to the off road networks.

Labor in Moreland will continue to seek financial support for the installation of pedestrian operated signals at busy locations and we will consider co-funding these signals in accordance with the Moreland Bike Plan.

Labor in Moreland will continue to ensure that new or rebuilt roads contain measures to improve the safety of cyclists. If this conflicts with the nature of the road, attempts shall be made to provide alternative routes for cyclists.



OPEN SPACES

Protecting and Expanding Public Open Space

Labor in Moreland will continue to upgrade and create new public open space.

Labor in Moreland will work to ensure that all residents have quality, accessible open space within safe walking distance.

Labor in Moreland will continue to develop parkland along our creek corridors and improve the natural environment so native wildlife can return to the creeks and wetlands.

Public Open Space

Labor in Moreland will continue to work to ensure that all residents have quality, accessible open space within safe walking distance, with regard to higher density areas.

Labor in Moreland will continue to involve the local community in open space decision making.

Labor in Moreland will establish new open space in Brunswick at Breese Street and West Street, Firth Street, Tinning Street, Sydney Road, Black Street and seek the acquisition of more land for public parks and open space.

Labor in Moreland will expand the Park Close to Home Strategy to allow for acquisition of more land and expansion of existing open space.

Creeks and Waterways

Moreland's waterways are a scarce and wonderful resource and their improvement has been instrumental in bringing back native flora and fauna to the area. Labor in Moreland will protect our creeks and waterways and create more open space along our creeks and wetlands for native wildlife to return to the creeks.

Labor in Moreland will support the consolidation of open space corridors and advocate for all state-owned land along the creek corridors to be gifted to council to be permanently rezoned for open space.

Labor will create a 'green tourism trail', from CERES to Lake Reserve and then Moomba Park.

OPEN SPACES

Labor in Moreland will complete the Edgers Creek Conservation and development plan and continue to revitalise the Moonee Ponds Creek.

Labor in Moreland will continue to work with the Creeks Friends groups, believing that the most effective way of improving the creeks is to involve residents.

Urban Heat Island Effect and Urban Forest

Reducing and responding to the Urban Heat Island – a phenomenon where the urban area is considerably warmer compared to surrounding rural areas – is a rapidly emerging priority.

Labor in Moreland will deliver practical measures that guide the sustainable planning, planting, management, resourcing and protection of vegetation across Moreland and implement the actions of the Urban Forest Strategy.

Labor in Moreland will investigate planting eatable trees in selected parkland and support community gardens.

RECREATION

Aquatic and Leisure Centres

Labor in Moreland will ensure that Council owned Aquatic and Leisure Centres are adequately funded with maintenance budgets allocated.

Sporting groups and facilities

Labor in Moreland has worked tirelessly to increase participation amongst a range of people in our community who are less likely to participate – women and girls, people with a disability, low income earners, single parent families, people from culturally diverse backgrounds, older adults.

Labor in Moreland will upgrade sporting pavilions and change rooms to enable greater access and participations of sports by all juniors and female teams.

RECREATION

Labor in Moreland will protect sporting reserves and move to ensure that all public land and open space is utilised to its full potential.

Labor in Moreland will investigate sharing arrangements of open space and sporting facilities at local schools, aiming to form partnerships that benefit both the local community and the schools.

FACILITIES

Libraries

Labor in Moreland is committed to maintain our libraries' ability to serve the Moreland community.

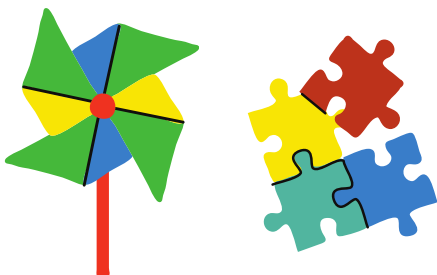
Libraries are key to accessing knowledge and breaking down barriers in society and as such Labor in Moreland will continue to ensure that the funds for the purchase of new books, audio visual and online books are increased.

Labor in Moreland will support our libraries in providing more activities and programs including rhyme time and story time in different languages for children and families.

Labor in Moreland will continue the libraries after dark program and program more activities in our public libraries.

Toy Library

Labor in Moreland recognises the importance of the Toy Library operating out of Jones Park in Brunswick and the Pascoe Vale Community Centre. Labor in Moreland will support ongoing financial assistance to the Toy Library to expand its operations and purchase new toys and provide facilities for their operations across the municipality.



FACILITIES

Neighbourhood Houses

Labor in Moreland will oversee the completion of the Brunswick Neighbourhood House's relocation to Saxon Street.

Labor in Moreland will continue to improve conditions of other neighbourhood houses in partnership with the community and other levels of Government.

Wheatsheaf Hub (Glenroy)

Labor in Moreland will complete the Wheatsheaf Community Hub in Glenroy. The Hub will include a new library, educational spaces, and health facility.

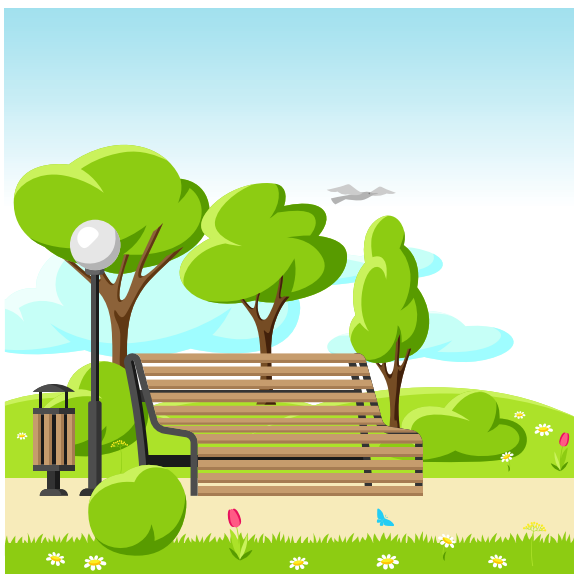
Saxon Street Hub (Brunswick)

Labor in Moreland will develop Saxon Street into a Community Hub with a focus on Arts and Culture.

Saxon Street will also include council services and the Brunswick Neighbourhood House.

Coburg Lake and Richards Reserve

Labor in Moreland will invest in Coburg Lake and its community facilities, including the stage for community performance and festivals. Labor in Moreland will develop a master plan for Richards Reserve to be developed into a music festival site co-located with cycling velodrome.



BUILDING LOCAL DEMOCRACY

Governance

Labor in Moreland's governance plan will include:

- Ensuring all decision-making processes are open and accessible;
- Listening to the needs of different neighbourhoods and precincts;
- Ensuring Council and Committee Meetings are open to public scrutiny;
- Introducing models of participatory democracy and citizen led policy making, such as participatory budgeting and citizen juries;
- Improve access to information for residents from non-English speaking communities;
- Keep municipal information services free of charge;
- Maintain a partnership approach to Industrial Relations.

Democratic Governance

Labor in Moreland will ensure that our local administration is accountable and will support:

- A full time Mayor;
- Collaboration with non-Labor elected councillors in direction setting and decision making;
- The use of on-line and video technology to ensure Council meetings are open;
- Provide for access to Council documents and ensure the effective use of the Council website;
- An ongoing review of councillors' portfolios and project responsibilities in order to provide the best possible governance model.

Council and Committee Meetings

Labor in Moreland will ensure that an absolute minimum of items will be dealt with in closed sessions of Council.

Opportunities for community observation of and input into decision making will be maximised. This will include open and interactive Council and Committee Meetings and Live Stream on social media and Facebook.

Labor in Moreland is committed to community consultation.

Labor in Moreland will review and improve its community consultation policy and mechanisms.

BUILDING LOCAL DEMOCRACY

Communications

Labor in Moreland will increase communication through newsletters, social media, online platforms like Conversations Moreland, community radio, and renewed efforts will be made to obtain improved coverage of Moreland items through metropolitan newspapers and the non-English media.

Moreland's main community languages will be used at least in part to communicate key messages to the community.

Community Advisory Committees

Labor in Moreland will use community advisory committees as a means of providing policy advice to the Council. A review will be undertaken of all existing advisory committees.

Additional committees will be established where required and promoted to the Moreland community.

Advocacy

Labor in Moreland will develop a strategic advocacy plan to increase advocacy efforts to the State and Federal on matters impacting the Moreland community, and working with other councils and different levels of government on issues such as planning, health, education and housing.



INDUSTRIAL RELATIONS

Labor in Moreland believes that productivity & service quality are best achieved as a partnership between employees (council officers), unions and the customer (the community).

Labor in Moreland will:

- Encourage employees to become members of the appropriate union;
- Provide a safe workplace, with appropriate security;
- Provide adequate training, re-training & professional development opportunities to ensure a skilled, innovative and resourceful workforce;
- Implement gender equality, equal opportunity and ensure fair, open and equitable selection processes;
- The maintenance of an award system that provides for equitable and relevant wages and conditions of employees.



YOUR LABOR TEAM

South Ward



Cr. Lambros Tapinos



Shirley Jackson



Helen Breier

North West



Praveen Kumar



North East



Cr. Annalivia Carli-Hannan



Ismene Thiveos



Rebekah Hogan

Moreland
Labor

Website:
morelandlabor.com.au

Follow us on Facebook
facebook.com/MorelandLabor

Authorised by L.Tapinos. 3/6 Howson Street Brunswick West

